

ELECTRIC GUITAR RGX TT SERVICE MANUAL



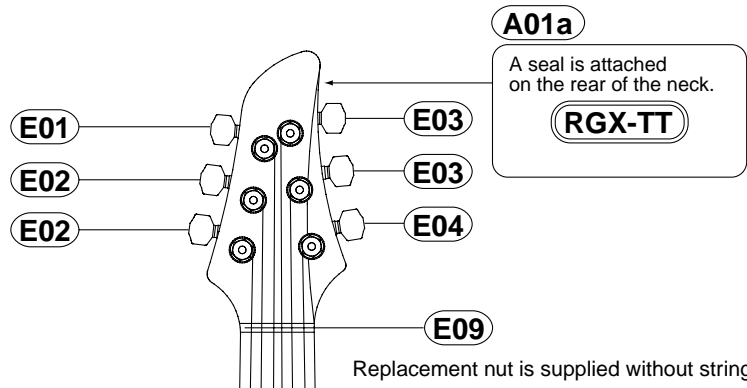
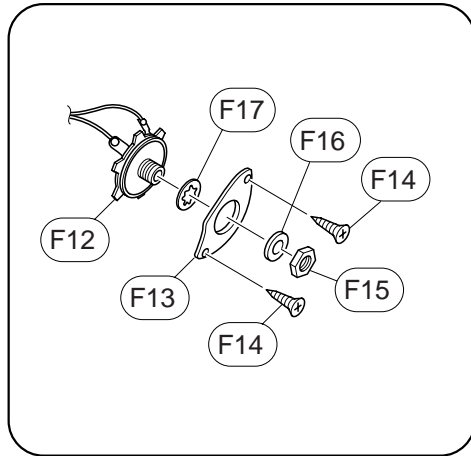
■ CONTENTS

OVERALL ASSEMBLY	2
BRIDGE UNIT	4
CIRCUIT BOARD	5
CIRCUIT DIAGRAM	5
WIRING	6
SPECIFICATIONS	6

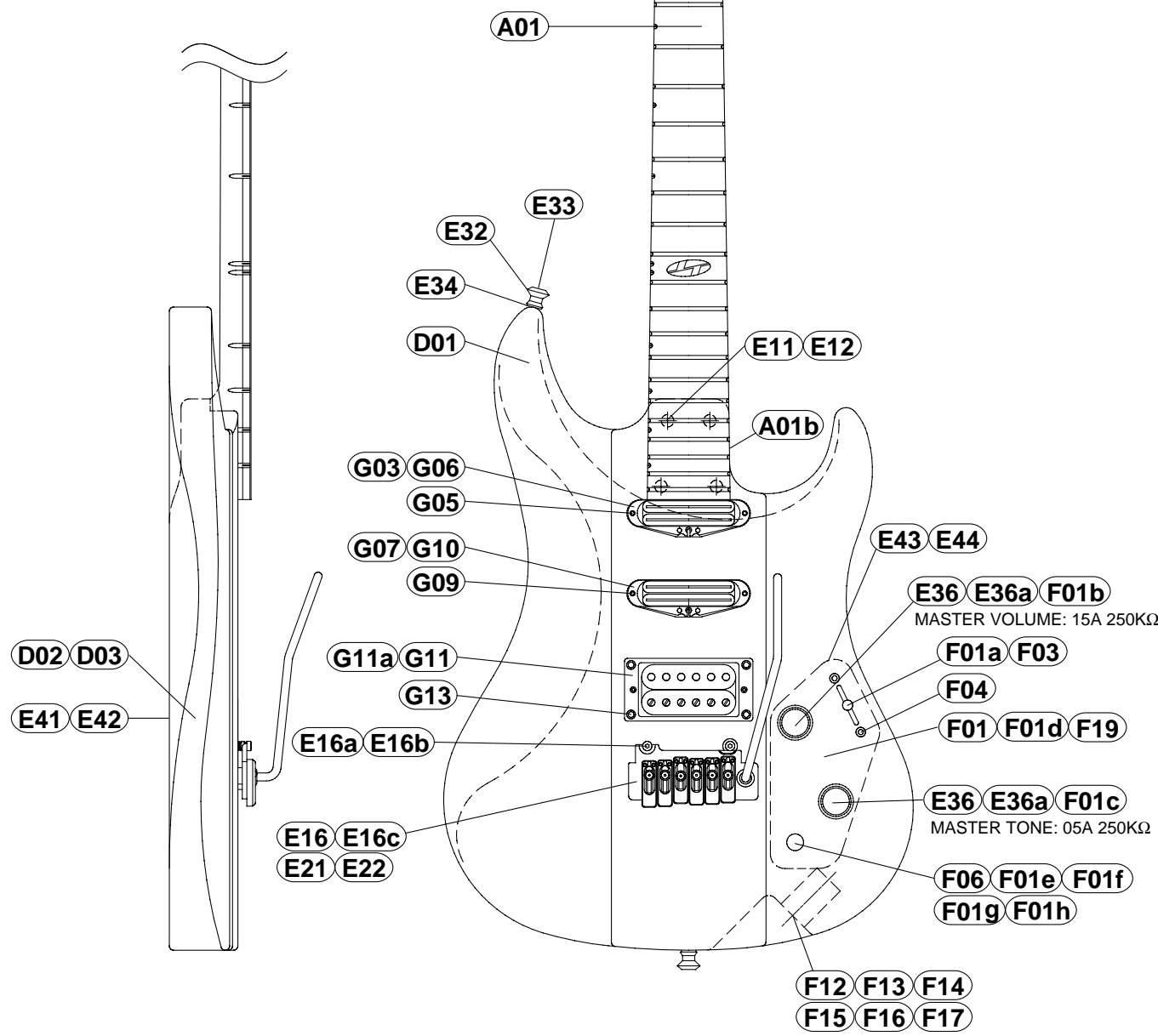
This document is printed on chlorine free (ECF) paper with soy ink.

OVERALL ASSEMBLY

• Jack Installation



Replacement nut is supplied without string slot.

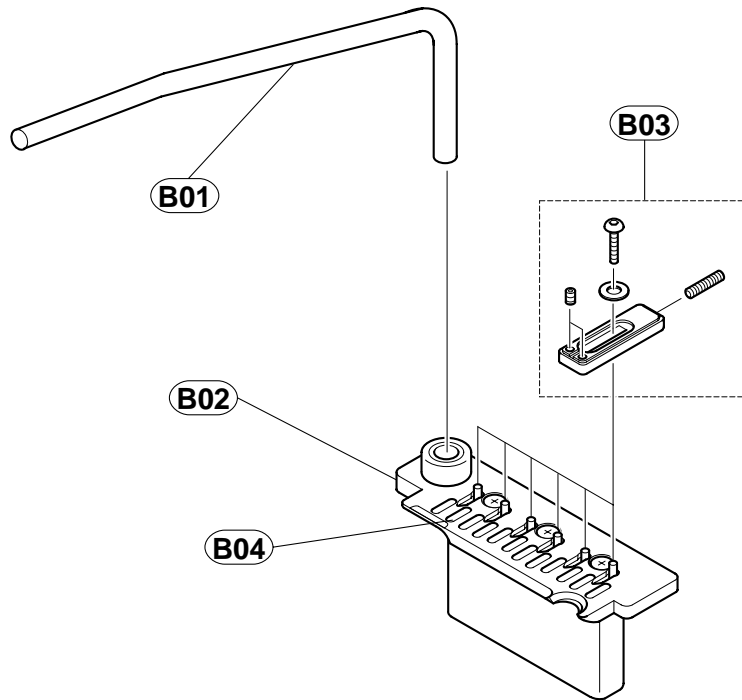


REF NO.	PART NO.	DESCRIPTION		REMARKS	QTY	RANK
		OVERALL ASSEMBLY		RGX TT		
* A01	AAX15010	Neck Assembly		TRS		
* A01	AAX15020	Neck Assembly		TGS		
* A01	AAX15030	Neck Assembly		TPS		
A01a	--	Seal		(QC57400)		
A01b	--	Side Adjuster		(QC57320)		
D01	--	Body				
* D02	QC573300	Tremolo Stopper				
D03	EN230200	Oval Head Tapping Screw	3.0X20 FNM33G (NI)		2	02
* E01	QC576800	Tuning Machine Assembly	SPERZEL 0.81" R BL	4 string		
* E02	QC576900	Tuning Machine Assembly	SPERZEL 0.87" R BL	5,6 string	2	
* E03	QC577000	Tuning Machine Assembly	SPERZEL 0.81" L BL	2,3 string	2	
* E04	QC577100	Tuning Machine Assembly	SPERZEL 0.87" L BL	1 string		
* E09	QC595400	Nut	43mm (Bone)			
* E11	QC573400	Screw Nut	M4.0(P0.7)X20		4	
* E12	QC574300	Bind Head Tapping Screw	4.0X40 FCM3BL (BL)		4	
* E16	QC574700	Bridge Unit	VS-100G (Black)			
E16a	QC382300	Nut			2	04
* E16b	QC574800	Bridge Column			2	
E16c	QC086700	Arm Spring			3	03
E21	AA815250	Spring Stopper				04
E22	EN240060	Spring Screw	4.0X45 FNM33G (NI)		2	01
E28	--	Strings	XL-120	1set (QC16510)		
E32	VB563800	Strap Button	ST type (Black)		2	01
E33	VD816500	Oval Head Tapping Screw	3.5X25 FNM33G (NI)		2	04
E34	VB793700	Spacer	Black		2	01
* E36	QC573500	Knob Assembly			2	
* E36a	AAX35960	Screw	M3.0X6 ZMC-BL (BL)		2	
* E41	QC573600	Back Cover	BRIDGE (Black)			
E42	EB620020	Oval Head Wood Screw	2.7X13 FCM3BL (BL)		6	03
* E43	QC573700	Back Cover	ELECTRICAL (Black)			
E44	EB620020	Oval Head Wood Screw	2.7X13 FCM3BL (BL)		3	03
F01	--	Electrical Unit		(QC57440)		
F01a	VJ398000	5-P P.U. Selector SW.	5-P			07
F01b	HS120090	Variable Resistor	15A 250K ohm	MASTER VOLUME		03
F01c	HS120100	Variable Resistor	05A 250K ohm	MASTER TONE		03
F01d	UA114220	Mylar Cap.	0.022uF 50 J			01
F01e	--	Circuit Board		(QC57950)		
F01f	VQ927900	Push Switch				03
* F01g	QC579400	Knob	Black			
F01h	UA154470	Mylar Cap.	0.047uF 50 J			01
F03	CB821810	Knob	BL			02
F04	03755170	Oval Head Screw	3.0X8 FCM3BL (BL)		2	01
F06	QC012900	Pan Head Tapping Screw	3.0X20 FCM3BL (BL)		2	01
F12	QC234800	Jack				06
* F13	QC044300	Jack Panel				05
F14	EB620020	Oval Head Wood Screw	2.7X13 FCM3BL (BL)		2	03
F15	AA820860	Hexagonal Nut	Black			01
F16	AA820850	Flat Washer	Black			01
F17	ET800180	Toothed Lock Washer	9S (A)		3	01
F19	EA620060	Round Head Wood Screw	2.7X13 FCM33G (CR)		3	03
* G03	QC573800	Pickup Assembly	DUNCAN SVR-1N (BL)	FRONT		
G05	20454100	Oval Head Tapping Screw	2.4X16 FCM3BL (BL)		2	01
G06	QA197100	Pickup Spring				
* G07	QC573800	Pickup Assembly	DUNCAN SVR-1N (BL)	CENTER		
G09	20454100	Oval Head Tapping Screw	2.4X16 FCM3BL (BL)		2	01
G10	QA197100	Pickup Spring				
* G11	QC573900	Pickup Assembly	DUNCAN SH-4 (BL)	REAR		
G11a	QA295800	Pickup Escutcheon		REAR		01
G13	20454100	Oval Head Tapping Screw	2.4X16 FCM3BL (BL)		4	01
H01	QC390700	Accessory Unit (G-6)		1set	07	
	QA262600	Cord	D			05
	AA809490	Wrench	#2.5			02
	AA821010	Wrench	#4.0			

*: New Parts

RANK: Japan only

BRIDGE UNIT



REF NO.	PART NO.	DESCRIPTION		REMARKS	QTY	RANK
*	QC574700	Bridge Unit	VS100G (Black)	Wilkinson by GOTOH		
*	B01	AAX17940	Arm (Black)			
*	B02	AAX17950	Bridge Base Assembly (Black)			
*	B03	AAX17960	Bridge Piece Assembly (Black)	1,6	2	
*	B03	AAX17970	Bridge Piece Assembly (Black)	2,5	2	
*	B03	AAX17980	Bridge Piece Assembly (Black)	3,4	2	
	B04	AX818180	Flat Head Screw (Black)		3	03

*: New Parts

RANK: Japan only

WARNING : CHEMICAL CONTENT NOTICE!

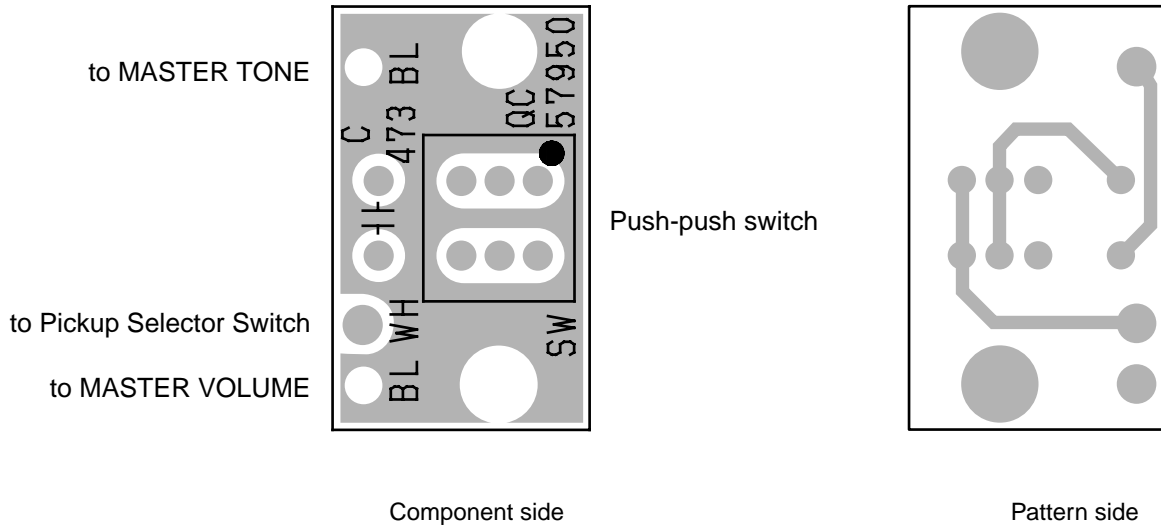
The solder used in the production of this product contains LEAD. In addition, other electrical/electronic and/or plastic (Where applicable) components may also contain traces of chemicals found by the California Health and Welfare Agency (and possibly other entities) to cause cancer and/or birth defects or other reproductive harm.

DO NOT PLACE SOLDER, ELECTRICAL/ELECTRONIC OR PLASTIC COMPONENTS IN YOUR MOUTH FOR ANY REASON WHAT SO EVER!

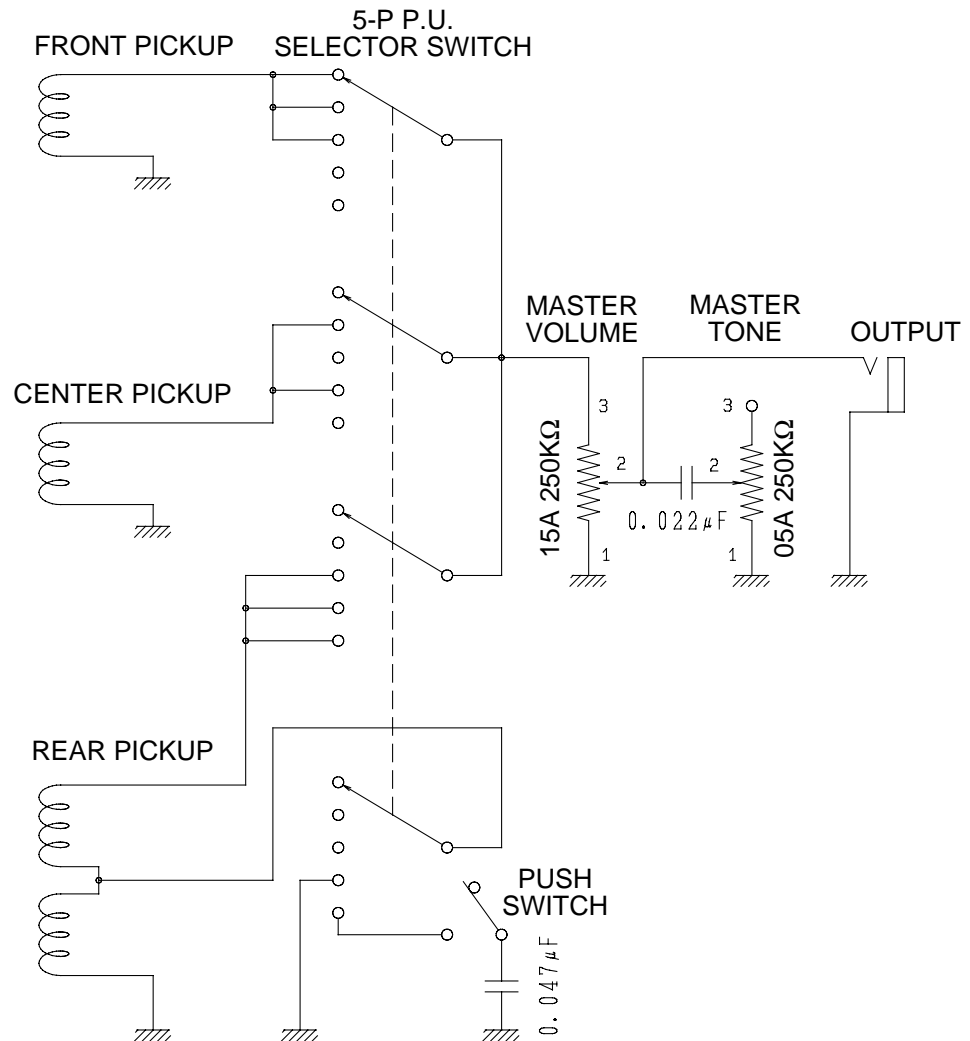
Avoid prolonged, unprotected contact between solder and your skin! When soldering, do not inhale solder fumes or expose eyes to solder/flux vapor!

If you come in contact with solder or components located inside the enclosure of this product, wash your hands before handling food.

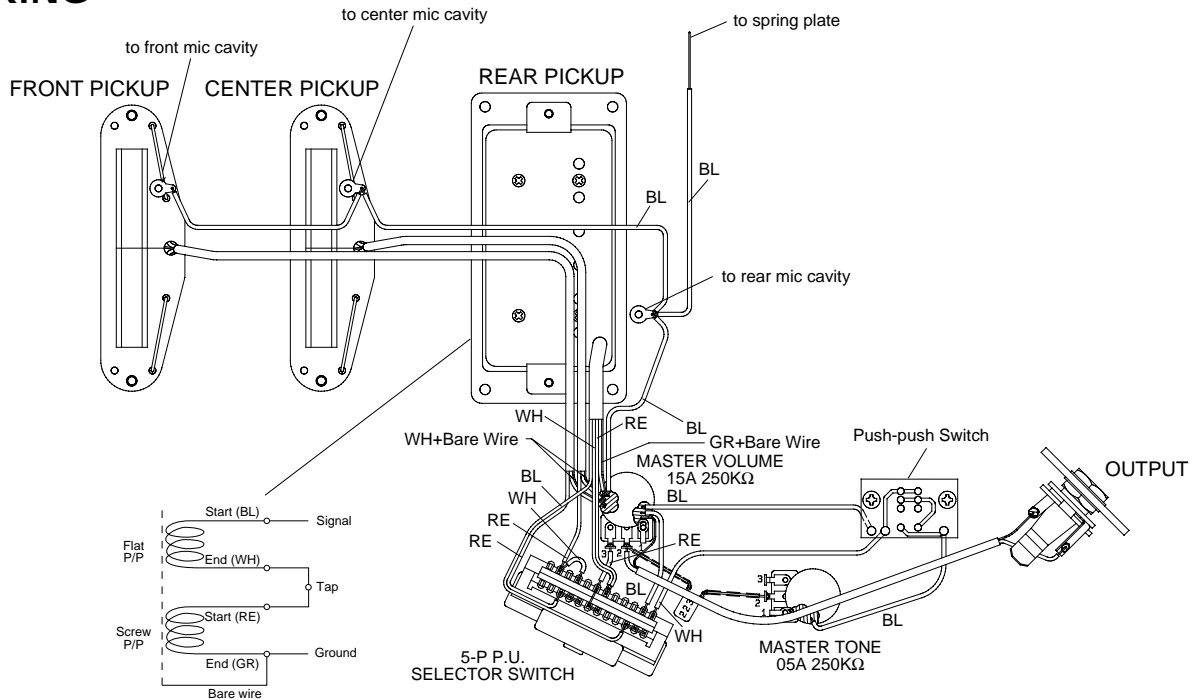
CIRCUIT BOARD



CIRCUIT DIAGRAM



WIRING



SPECIFICATIONS

STANDARD SPECIFICATIONS

- Scale Length 648mm
- Body-Neck Construction Bolt On
- Length 943.5mm
- Width 322mm
- Net Weight 3.1kg

COLOR

- Body
- TRS Translucent Red Sunburst
 - TGS Translucent Green Sunburst
 - TPS Translucent Purple Sunburst

- Neck
- TRS Translucent Red Sunburst
 - TGS Translucent Green Sunburst
 - TPS Translucent Purple Sunburst

BODY

- Material American Basswood+Maple
- Coating Figured Maple/Horse Chestnut
- Body Depth 47mm

FINGERBOARD

- Material Rosewood
- Fingerboard Width 0-F 43.0 mm, 12-F 52.5 mm
- No. of Frets 22

NECK

- Material Maple
- Neck Thickness 1-F 19.5 mm, 12-F 20.5 mm

PARTS

- Hardware Black Plated
- Nut Bone
- Bridge VS-100G (Black)
- Strings XL-120

CONTROLS

- Volume 15A 250KΩ x 1
- Balance 05A 250KΩ x 1
- Pickup Selector Switch 4pole 5position Lever Switch

PICKUPS

- Front/Center Single Coil (Duncan SVR-1N)
- Rear Humbucking (Duncan SH-4)